

Monthly Weather Summary in Thailand March 2019

In March 2019, the weather condition was hot in upper Thailand almost the whole month with very hot in some places of the northern, northeastern and central parts as a result of the heat low pressure cell covering upper Thailand almost the whole month which induced average temperature of March higher than normal and the new highest record of maximum temperature was established in some places. For rainfall, upper Thailand has less rainfall during the beginning and the middle of the month. After that, during late month, due to the extending of the high pressure areas from China to cover upper Thailand and the South China Sea, the southerly and southeasterly wind prevailing over upper Thailand accompanied and the westerly trough moved to cover the northern, upper central and northeastern parts for few days resulted in unusual rainfall with thundershower and gusty wind occurred in many areas. In southern part, the weather was hot during the middle and the end of March whereas rainfall was observed during late March due to the easterly wind which prevailed over the southern part was strengthened. Monthly rainfall was below normal in almost parts of the country i.e. northern part 11.3 mm (41%), northeastern part 25.8 mm (58%), central part 25.7 mm (71%), southern part (east coast) 52.5 mm (77%) and southern part (west coast) 44.5 mm (50%) while there was above normal rainfall in the eastern part 7.3 mm (12%). The average amount of rainfall in March was lower than normal with the deviation of 23.0 millimeter or about 47%.

1 – 10 March: Heat low pressure cell covering upper Thailand throughout the period in addition with the southerly and southeasterly wind prevailing over the mentioned areas caused generally hot weather in upper Thailand especially in the northern, northeastern, central and upper eastern parts and very hot weather was found in some areas of Tak province with the highest maximum temperature of 40.0 °C on March 7. For rainfall, isolated rain was observed in the northeastern, central and eastern parts during early period with heavy rainfall in some areas in the eastern part. The maximum daily rainfall was 96.5 mm at Phliu Agometeorological Station in Chanthaburi province on March 1. Gusty wind was reported at Roi Et province on March 4. In southern part, hot weather was observed in several areas mainly along the west coast. Less rainfall was observed in southern part with the highest daily rainfall of 28.6 mm at Khuan Don in Satun province on March 7.

11 – 20 March: Heat low pressure cell covering upper Thailand and the southerly and southeasterly wind prevailing over upper Thailand during early period, hot weather persisted in upper Thailand with very hot weather in some areas in the northern, northeastern and central parts. The highest daily rainfall was 40.4 °C at Thoen in Lampang province on March 18 And at Nang Rong in Buriram province on March 13. For rainfall, less rainfall was mainly observed in upper Thailand. However, under the extending of the high pressure area during mid-period and the passage of the westerly trough through the northern and northeastern parts during March 18 and 19. These caused isolated rain with heavy rainfall in some areas in the northern part during March 18 and 19 and scattered to fairly widespread rain in the central and eastern parts during period, northern part

obtained isolated to scattered rain with heavy rainfall in some areas on March 18 and 19 as well as central and eastern parts received scattered to fairly widespread rain with heavy rainfall in some areas during mid-period. The heaviest daily rainfall in upper Thailand was 85.9 millimeter at Sankhla Buri in Kanchanaburi province on March 18. Gusty wind was reported at Phetchabun, Kamphaeng Phet, Lampang, Phrae, Phayao, Lumphun and Loei provinces on March 18 and at Udon Thani, Khon Kaen, Uthai Thani and Suphanburi provinces on March 19 and at Kalasin, Nakhon Ratchasima and Nakhon Phanom provinces on March 20. Hail was reported at Lampang, Phrae, Phayao and Lamphun provinces on March 18 and at Udon Thani province on March 19. In southern part, hot weather was found in many areas and isolated light to moderate rain was reported for few days with the maximum daily rainfall of 16.7 millimeter at Amphoe Mueang in Satun province on March 11.

21 – 31 March: Due to the covering of heat low pressure cell over upper Thailand, hot weather remained in upper Thailand nearly the whole period with successive of very hot weather in some places during early and late period. The highest maximum temperature was 41.5 °C at Thap Phueng Sub-District, Si Samrong in Sukhothai province on March 21 and at Kosum Phisai in Maha Sarakham province on March 23. For rainfall, with the effect of high pressure area extending to cover upper Thailand during mid-period, the southerly and southeasterly wind prevailing over lower northeastern and eastern parts during late period and the passage of the westerly trough to the northern, upper central and upper northeastern parts during March 27 and 28 resulted in unusual rainfall mainly in the lower northern, northeastern and eastern parts with thundershower and gusty wind in many areas during this period. The maximum daily rainfall was 108.0 millimeter at Laem Ngop in Trat province on March 25. Thunderstorm and gusty wind was reported at Pathum Thani and Bangkok Metropolis provinces on March 21, at Sa Kaeo province on March 23, at Phichit and Phetchabun provinces on March 25, at Chiang Mai, Phitsanulok, Phetchabun and Phichit provinces on March 26, at Nan and Lampang provinces on March 27, at Ubon Ratchathani province on March 28, at Buriram province on March 29 and at Ubon Ratchathani province on March 30. Gusty wind also reported at Ubon Ratchathani province on March 22, at Buriram province on March 23, at Nakhon Phanom, Khon Kaen and Nakhon Ratchasima provinces on March 31. Thundershowers was reported at Buriram and Sisaket provinces on March 23, at Nong Bua Lam Phu province on March 26, at Nong Khai, Nakhon Phanom and Khon Kaen provinces on March 27 and at Kalasin province on March 28 as well. In southern part, the easterly wind which prevailed over southern part was active during mid-period caused rainfall during that time. The highest daily rainfall was 60.0 millimeter at Chai Buri and Vibhavadi in Surat Thani province on March 30 and gusty wind was reported at Krabi province on March 23.

Note : Rainfall, temperatures and natural disasters in this report were updated up to April 3, 2019

Climatological Center
Meteorological Development Division
Meteorological Department

Breaking records of the highest maximum temperature in March

Station	New Record 2019		Previous Record		Start since
	Temperature (°C)	Date	Temperature (°C)	Date / Year	
Sukhothai	41.5	21	40.7	31/2005	2000
Pathum Thani Agromet. Stn.	40.3	22	39.6	25/2013	1998
Chonburi	38.7	22	38.4	17/1991	1951
Ko Hong Agromet. Stn.	37.3	23	37.2	16/2007	1969
Sa Dao (Songkhla)	39.2	23	38.5	3/2010	1999
Yala Agromet. Stn.	38.9	23	38.4	25/1982	1982
				18/2004	
				12/2005	

Monthly Current Report
Rainfall and Accumulative Rainfall
March 2019

Northern Thailand

Station	Temperature (°c)		Rainfall (mm)		Accumulative rainfall (mm) Since 1 January	
	Mean	Above or below normal	Actual	Above or below normal	Actual	Above or below normal
Chiang Rai	25.5	0.9	0.0	-28.2	65.1	15.6
Mae Hong Son	26.4	-0.3	0.0	-16.8	55.4	26.2
Phayao	26.5	0.1	27.8	-2.4	58.6	13.5
Chiang Mai	28.5	1.4	0.0	-17.8	67.8	36.9
Tha Wang Pha	26.5	0.6	12.4	-21.1	38.3	-11.2
Nan	27.7	0.9	3.9	-28.8	96.4	47.4
Lamphun	27.9	0.2	0.0	-13.1	38.6	17.8
Lampang	29.1	1.1	0.3	-22.5	36.8	2.4
Mae Sariang	26.4	0.4	0.0	-14.2	46.7	24.5
Phrae	29.0	1.1	3.8	-23.8	43.4	1.2
Uttaradit	29.7	1.0	0.0	-23.4	11.0	-32.4
Bhumibol Dam	30.9	1.2	4.2	-16.9	12.7	-17.9
Tak	31.5	1.3	1.8	-10.3	16.1	-6.8
Mae Sot	27.9	0.7	48.3	32.8	80.3	54.9
Umphang	25.0	0.6	71.5	23.6	89.7	25.9
Phitsanulok	29.3	0.1	5.7	-21.0	120.4	76.3
Lom Sak	28.9	0.9	73.8	30.0	116.7	51.0
Phetchabun	29.5	0.8	56.2	8.3	89.8	20.2
Wichian Buri	30.6	1.1	25.6	-25.0	42.8	-28.1
Kamphaeng Phet	29.8	1.1	1.0	-35.7	34.0	-18.1
Over the area	28.3	0.7	16.8	-11.3 -40%	58.0	14.9 35%

Northeastern Thailand

Station	Temperature (°c)		Rainfall (mm)		Accumulative rainfall (mm) Since 1 January	
	Mean	Above or below normal	Actual	Above or below normal	Actual	Above or below normal
Nong Khai	29.2	1.6	38.6	-1.2	103.2	37.8
Loei	28.3	1.4	1.9	-37.4	29.4	-32.2
Udon Thani	29.4	1.4	17.4	-32.3	72.6	-5.4
Nakhon Phanom	29.3	2.3	43.8	-16.3	64.6	-29.5
Sakon Nakhon	29.8	2.6	12.9	-44.6	32.6	-58.9
Mukdahan	30.1	2.4	10.2	-28.6	80.3	20.4
Khon Kaen	30.3	1.8	44.9	2.8	58.8	-8.7
Kosum Phisai	30.9	2.5	6.9	-44.9	33.8	-36.5
Roi Et	30.8	2.6	26.6	-14.6	37.4	-26.6
Chaiyaphum	31.1	2.3	14.4	-36.9	15.9	-54.2
Ubon Ratchathani	30.9	2.0	19.5	-11.0	19.5	-28.4
Tha Tum	30.3	1.6	22.2	-22.0	24.3	-41.1
Surin	30.8	2.1	26.6	-19.0	34.1	-28.6
Nakhon Ratchasima	30.8	1.9	14.0	-23.1	27.3	-34.1
Chok Chai	30.5	2.0	2.0	-35.5	3.0	-53.3
Nang Rong	30.5	2.1	0.9	-47.0	4.7	-67.5
Over the area	30.2	2.0	18.9	-25.8 -58%	40.1	-27.9 -41%

- NOTES :
- 1) Mean temperature is the average of daily dry-bulb temperature
 - 2) "T" is trace, rainfall amount less than 0.1 mm.
 - 3) "blank" is incomplete data.
 - 4) Temperature and rainfall are preliminary data.

Monthly Current Report
Rainfall and Accumulative Rainfall
March 2019

Central Thailand

Station	Temperature (°c)		Rainfall (mm)		Accumulative rainfall (mm) Since 1 January	
	Mean	Above or below normal	Actual	Above or below normal	Actual	Above or below normal
Nakhon Sawan	31.6	1.4	0.3	-32.8	42.0	-7.3
Bua Chum	30.5	1.0	37.0	-8.8	41.2	-20.4
Lop Buri	30.4	0.9	0.0	-32.1	2.5	-42.2
Suphan Buri	30.5	1.5	0.0	-18.9	0.8	-28.7
Thong Pha Phum	29.1	0.3	33.0	-13.4	34.6	-33.6
Kanchanaburi	31.1	1.4	0.6	-28.4	13.9	-36.6
Bangkok Airport	30.4	0.9	2.0	-38.4	2.8	-58.0
Bangkok Metropolis	30.2	0.7	9.2	-32.9	10.3	-65.1
Over the area	30.5	1.0	10.3	-25.7 -71%	18.5	-36.5 -66%

Eastern Thailand

Station	Temperature (°c)		Rainfall (mm)		Accumulative rainfall (mm) Since 1 January	
	Mean	Above or below normal	Actual	Above or below normal	Actual	Above or below normal
Prachin Buri	30.8	1.3	23.7	-26.2	24.5	-48.9
Kabin Buri	29.9	0.8	85.3	33.8	98.7	13.3
Aranyaprathet	30.7	1.1	101.1	48.7	101.2	15.8
Chon Buri	29.8	0.6	24.9	-22.6	69.2	-2.5
Ko Sichang	29.5	0.8	20.2	-29.4	22.8	-53.4
Pattaya	28.9	0.7	24.4	-28.9	82.4	-0.8
Sattahip	29.0	0.4	54.9	-3.9	103.3	-0.5
Rayong	29.4	0.4	105.4	35.1	116.6	-10.9
Chanthaburi	28.9	0.8	102.3	30.4	114.4	-12.6
Khlong Yai	28.7	0.8	151.9	36.6	200.0	-38.5
Over the area	29.6	0.8	69.4	7.3 12%	93.3	-14.0 -13%

- NOTES :
- 1) Mean temperature is the average of daily dry-bulb temperature
 - 2) "T" is trace, rainfall amount less than 0.1 mm.
 - 3) "blank" is incomplete data.
 - 4) Temperature and rainfall are preliminary data.

Monthly Current Report
Rainfall and Accumulative Rainfall
March 2019

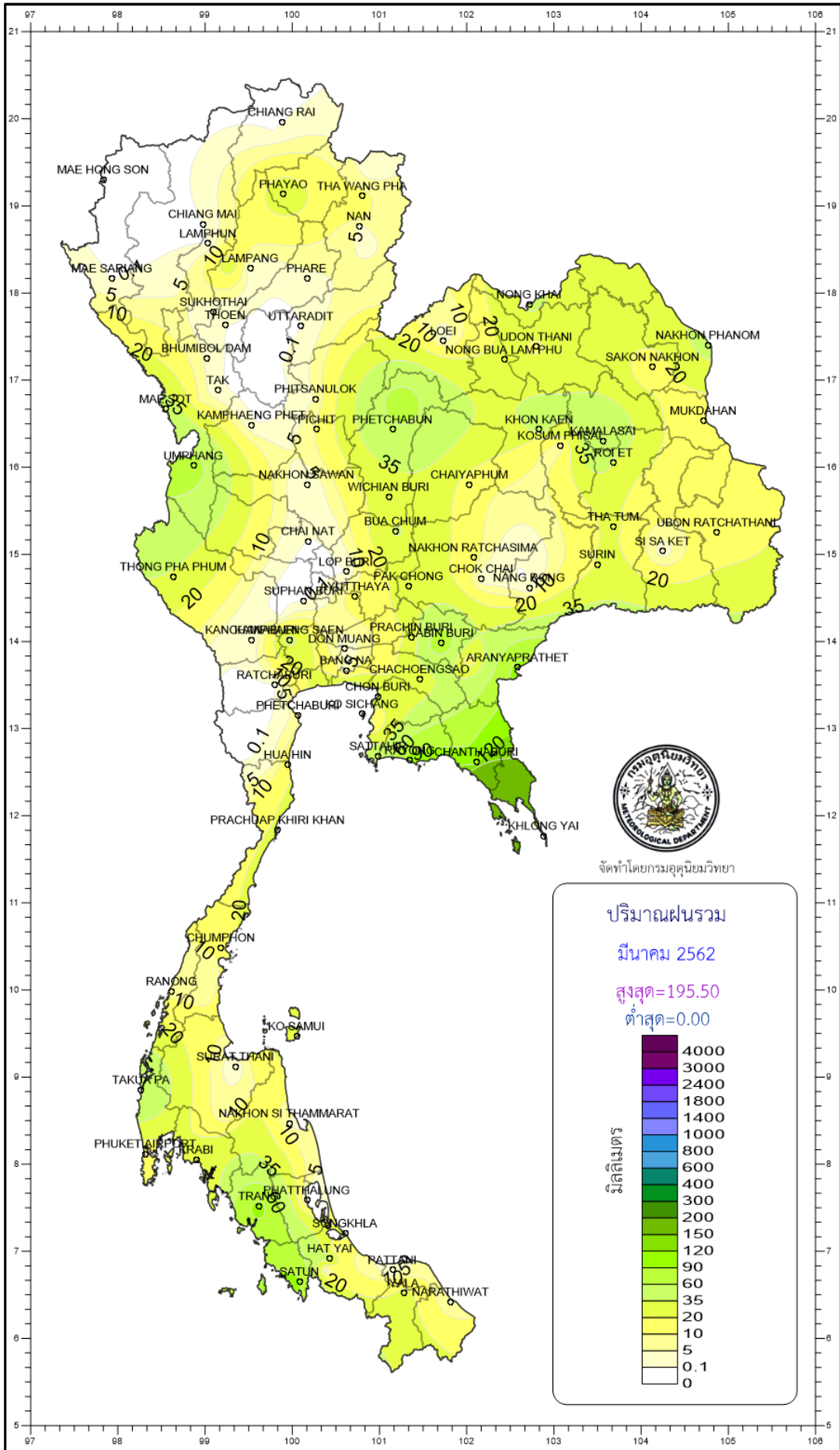
Southern Thailand, east coast

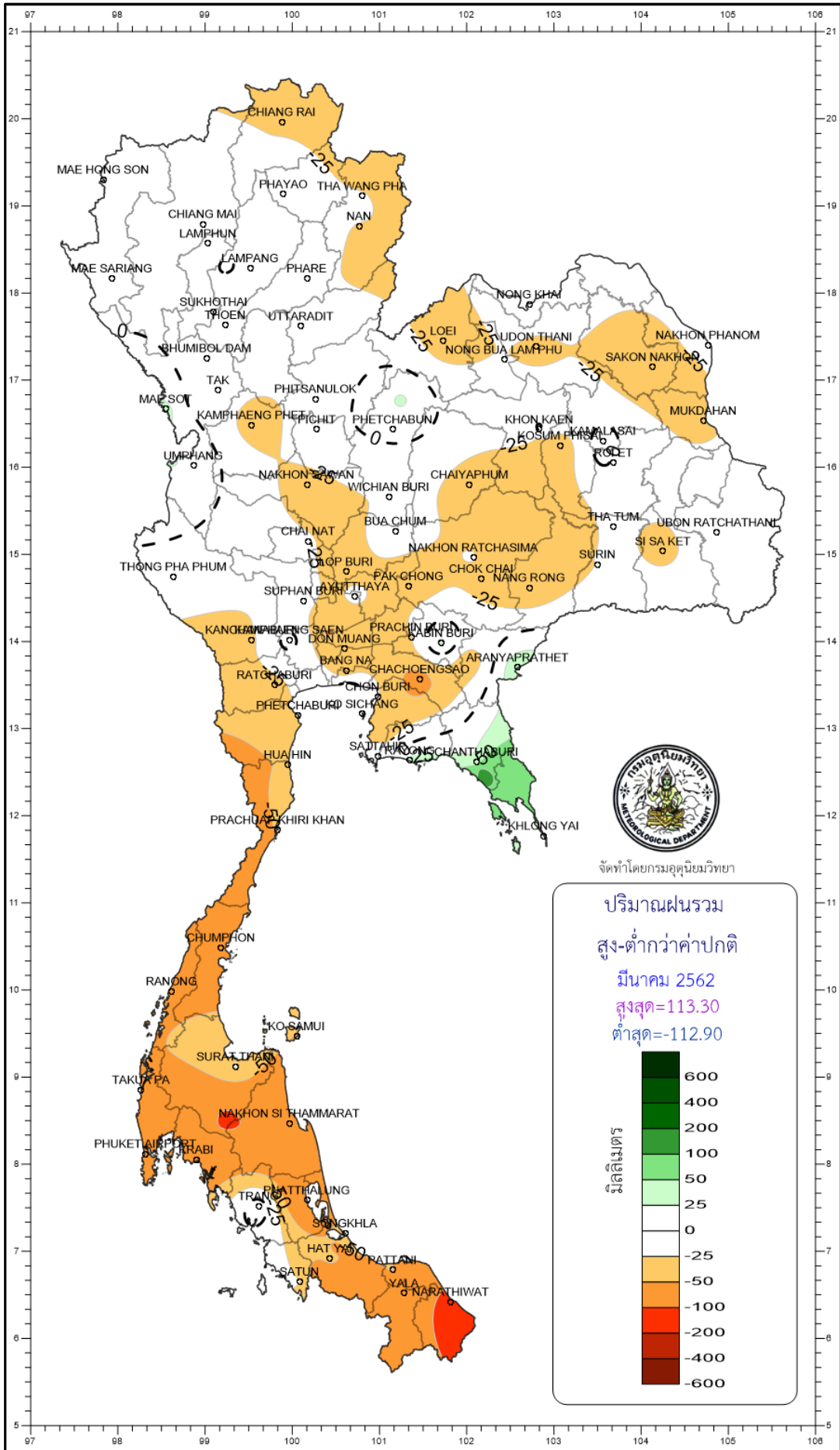
Station	Temperature (°c)		Rainfall (mm)		Accumulative rainfall (mm) Since 1 January	
	Mean	Above or below normal	Actual	Above or below normal	Actual	Above or below normal
Phetchaburi	29.4	0.9	7.8	-25.3	16.6	-31.8
Hua Hin	28.9	0.5	16.8	-37.1	28.6	-52.4
Prachuap Khiri Khan	28.6	0.7	23.2	-48.6	140.4	22.4
Chumphon	28.5	0.7	15.6	-81.6	284.3	83.0
Surat Thani	28.3	0.8	1.2	-22.8	110.5	37.4
Ko Samui	28.4	0.2	30.4	-50.4	265.0	43.6
Nakhon Si Thammarat	28.1	0.7	3.8	-85.9	438.5	135.2
Songkhla	28.6	0.5	26.1	-33.6	212.0	28.9
Hat Yai Airport	28.2	0.6	45.0	-30.1	159.0	5.7
Pattani Airport	28.1	0.8	0.0	-49.4	274.1	141.8
Narathiwat	28.0	0.7	4.5	-112.9	313.9	41.2
Over the area	28.5	0.7	15.9	-52.5 -77%	203.9	41.3 25%

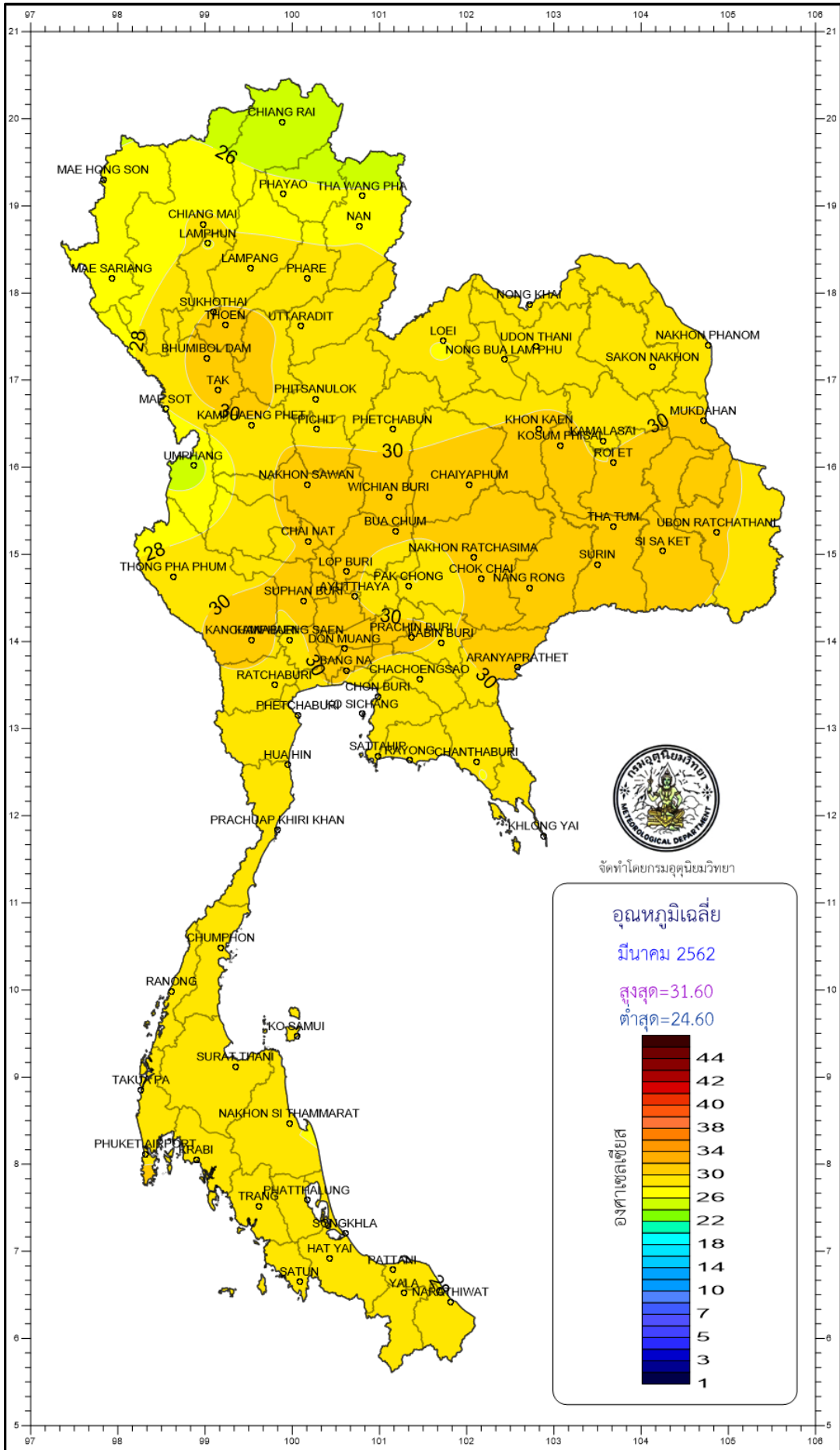
Southern Thailand, west coast

Station	Temperature (°c)		Rainfall (mm)		Accumulative rainfall (mm) Since 1 January	
	Mean	Above or below normal	Actual	Above or below normal	Actual	Above or below normal
Ranong	29.1	0.7	7.7	-57.5	115.6	24.4
Takua Pa	28.7	1.0	61.8	-52.8	171.5	-23.6
Phuket	30.5	1.3	13.6	-59.9	64.2	-63.5
Phuket Airport	29.5	1.2	9.7	-90.6	191.8	28.1
Ko Lanta	29.3	0.5	18.8	-43.7	30.8	-64.6
Trang Airport	28.9	0.8	100.7	17.3	161.4	24.7
Satun	29.1	0.7	98.0	-24.0	145.0	-44.0
Over the area	29.3	0.9	44.3	-44.5 -50%	125.8	-16.9 -12%

- NOTES :
- 1) Mean temperature is the average of daily dry-bulb temperature
 - 2) "T" is trace, rainfall amount less than 0.1 mm.
 - 3) "blank" is incomplete data.
 - 4) Temperature and rainfall are preliminary data.







จัดทำโดยกรมอศุนิยมวิทยา

อุณหภูมิจนเดือนมีนาคม 2562

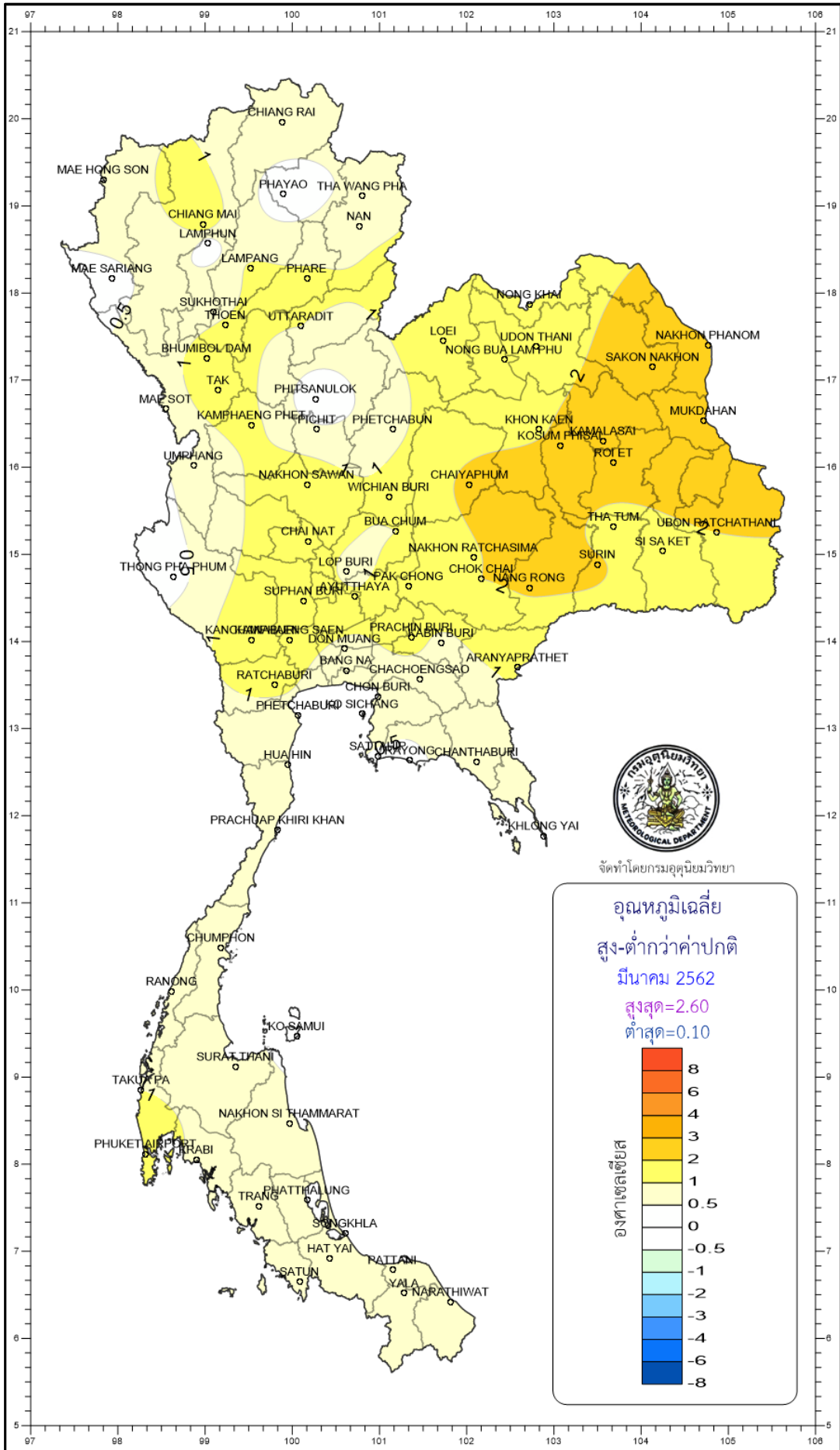
มีนาคม 2562

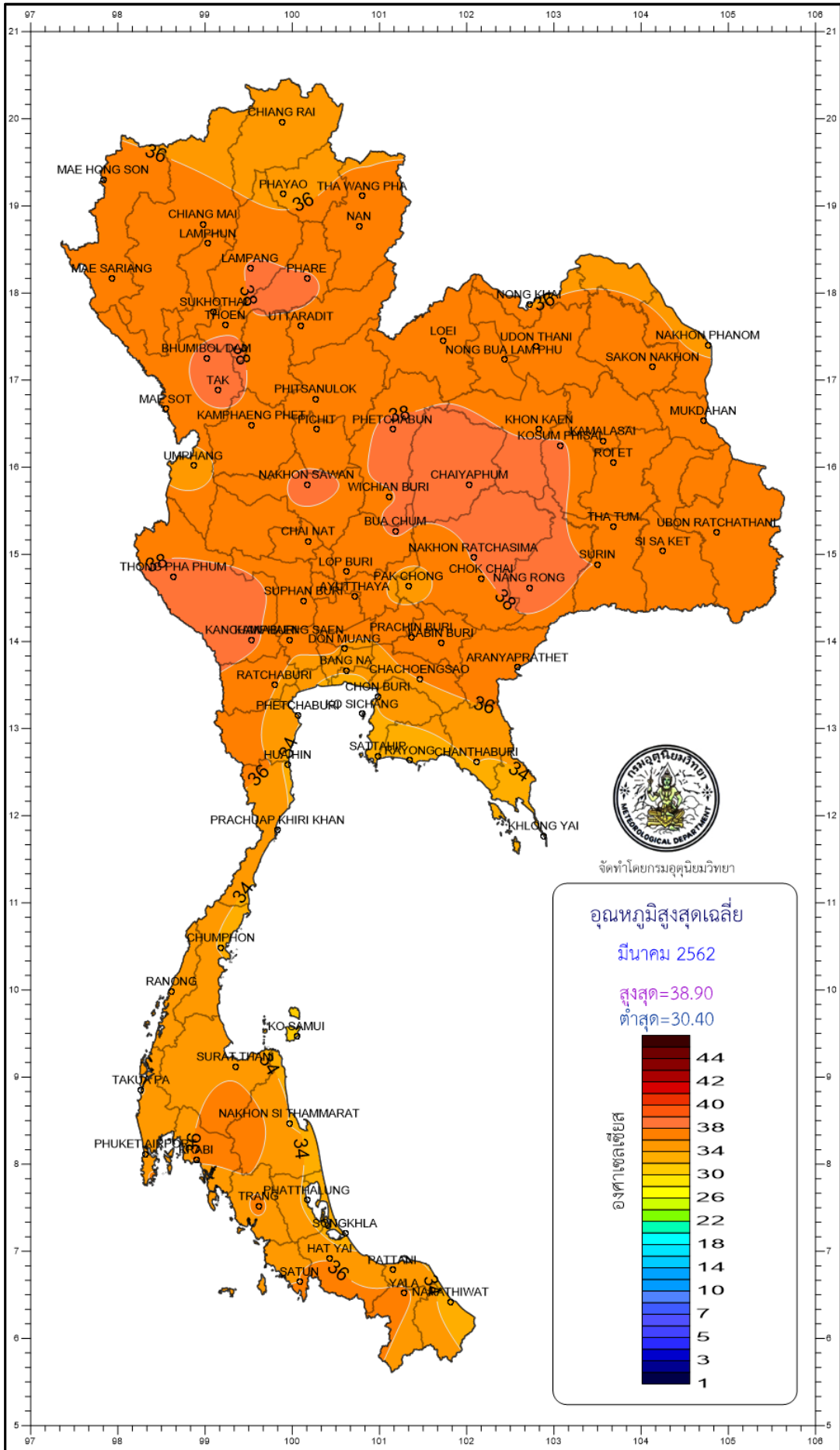
สูงสุด=31.60

ต่ำสุด=24.60

องค์การอนามัยโลก

44
42
40
38
34
30
26
22
18
14
10
7
5
3
1





จัดทำโดยกรมอุตุนิยมวิทยา

อุณหภูมิสูงสุดเฉลี่ย

มีนาคม 2562

สูงสุด=38.90

ต่ำสุด=30.40

